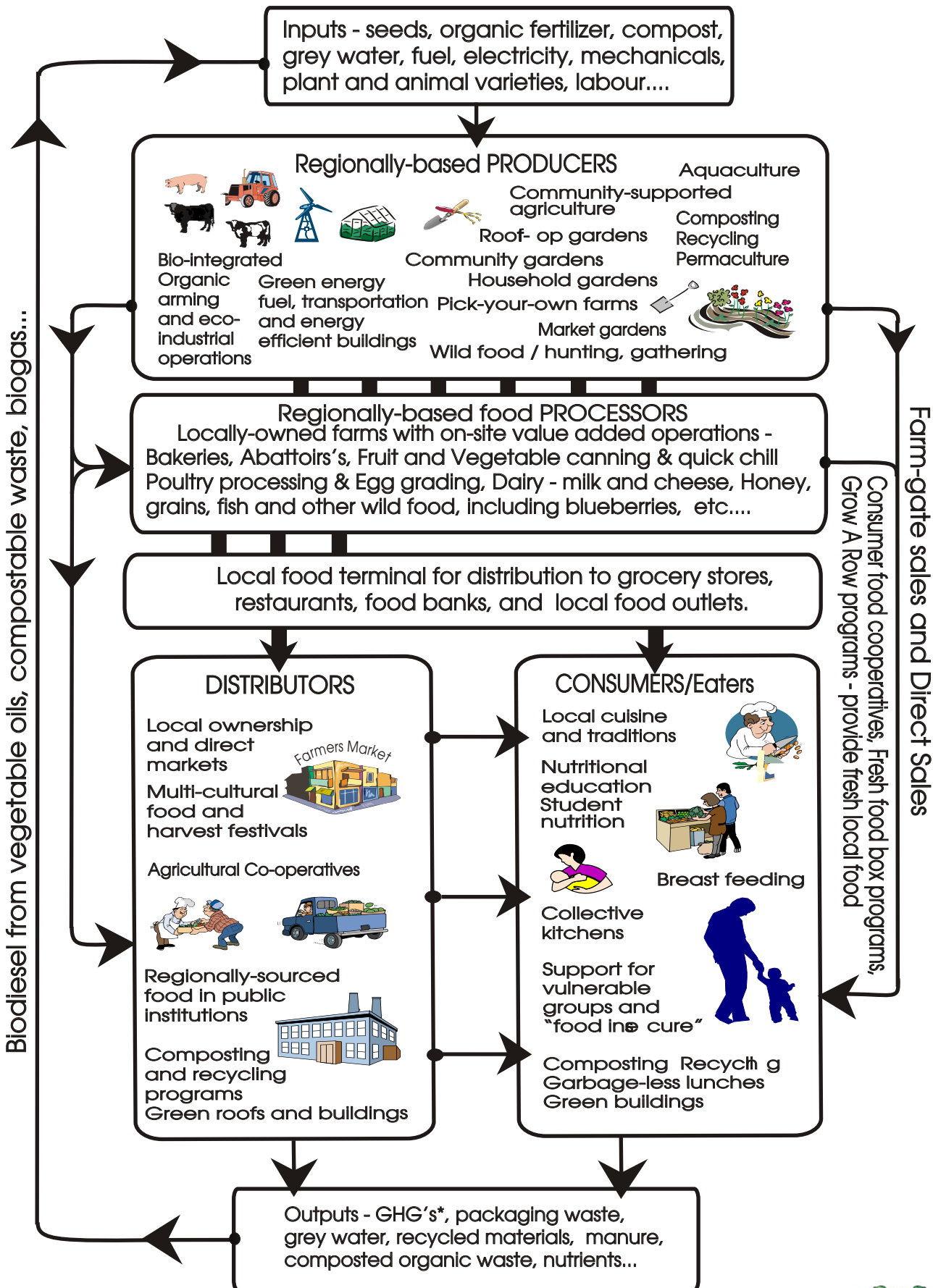


What would a local, sustainable and equitable food system look like? ...the ideal foodshed



Food Policy Council: Policies related to food Insecurity, Income security, Food education, Environmental regulations, Agricultural land use, Farmer training, School food providers, Food labeling, Community gardens, Not-for-profit services, Emergency food systems, Transportation Infrastructure, etc.

* Greenhouse gas emissions